



NISSAN TITAN XD 2016-Newer

**Thank you for choosing White Knuckle Rock Sliders**

Please read instructions before beginning installation. Check hardware kit contents against content list below. Also, check the tools needed against the list below.

**Install time:** 1-2 hours

1 helper recommended

#### **Hardware Kit**

- 1-Driver Side Rock Slider
- 1-Passenger Side Rock Slider
- 4 – 1/2" X 2 X 10-1/2" Backing Plates
- 2 – 1/2" X 2 X 10-1/4" Backing Plates
- 1 – 1/2" X 2 X 11-1/4" Backing Plate
- 1 – 3/8" X 2 X 11-1/4" Backing Plate with Welded Nut
- 15 – 1/2" X 5" Grade 8 Bolts
- 1 – 1/2" X 4" Grade 8 Bolt
- 15 – 1/2" Nuts, Flat Washers, and Lock Washers
- 4 – 3/8" X 1" X 2-1/2" Plastic Spacers for Hard Line Clips with two sided tape

#### **Tools Needed**

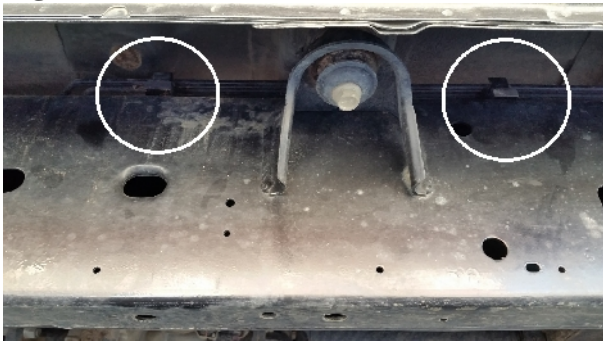
- Floor Jack
- 2 Axle Stands
- 3/4" Wrench and/or Ratchet and Socket
- 10mm Wrench

### **INSTALLATION INSTRUCTIONS**

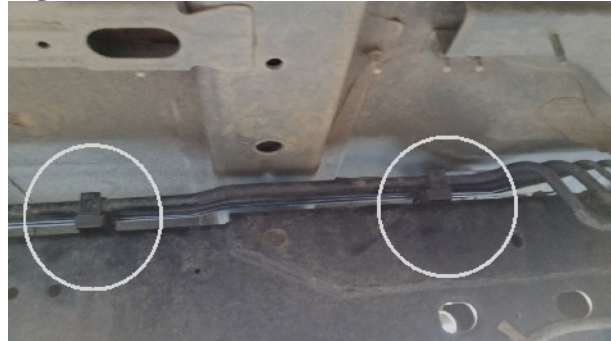
1. **DRIVER SIDE** Unsnap the 4 hard line plastic clips from the top of the vehicle frame on the driver side **Figure 1**. Clean the area of the frame where the plastic spacers will be fixed. Expose the adhesive on the two sided tape and attach the plastic spacers between the frame and the hard line clips then secure assembly in original place on frame **Figure 2**. This will allow for the top bolts to be put in place. Next, remove the screw that attaches the hard line bracket at the rear mount on the driver side. The rear mounting plate will cover the bracket and hold it in place **Figure 3**. Also, remove the hard line shield at the front slider mounting area by removing the two screws that hold it in place **Figure 4**. Replace after you have finished tightening all of the slider mounting bolts.
2. Place the axle stands directly under the rocker panel. Place the rock slider on the axle stands **Figure 5**.
3. You can use the floor jack for minor adjusting of the position of the slider. Place the floor jack under the center of the rock slider and lift until the mounting plates are in a position to push the bolts through the backing plate. **NOTE:** Slide the backing plates up from the bottom against the inside of the frame to insure brake lines, wiring, etc. will not be pinched by the backing plate. Front and 2nd backing plates are 10-1/2" long; 3rd is 10-1/4" long and rear is 11-1/4" long. The top bolts need to be reversed by pushing through the backing plates first then the mounting plates due to limited space. **NOTE:** The 3/8" x 2" x 11-1/4" backing plate with welded nut is for the rear driver side position between the fuel tank and frame. The welded nut needs to be facing outward against the frame to avoid any possible rubbing against the fuel tank and the 4" bolt is to be used at this mounting point.

4. Once all of the bolts with washers have been started, center the slider relative to the rocker panel. Keep a consistent gap (around 1") between the slider and the bottom of the rocker panel. The gap can be adjusted by simply lifting one end. Tighten all of the nuts rotating from top to bottom to ensure the backing plate stays straight **Figure 6**. Finally, recheck each for tightness.

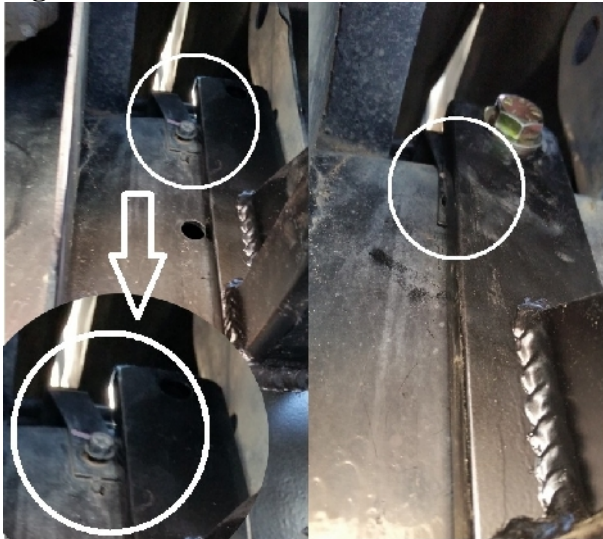
**Figure 1**



**Figure 2**



**Figure 3**



**Figure 4**



**Figure 5**



**Figure 6**



## **SAFETY FIRST**

**Observe proper safety procedures during installation. Improperly used tools and unsafe procedures can cause injury or death. Refer to manufacturers manuals for use and warnings of tools to be used. Modifications to your vehicle can cause dangerous conditions. The buyers and users of this product assume all risks associated with the installation and use of this product. All installations should be made by a qualified mechanic.**

## **DISCLAIMER**

**White Knuckle Off Road Products, LLC stands behind all of our quality off-road fabricated products. WKORP will not be held responsible nor will we accept liability for failure of parts as a result of extreme off-road use. Minor modifications may be required to allow the installation of our products.**

**Modifications to your vehicle using products manufactured by WKORP may create dangerous conditions. Modifications to your vehicle are done at your own risk. WKORP will not accept responsibility or liability from damage or personal injury caused by installing or using installed products manufactured by WKORP whether intended or unintended. The buyer accepts all responsibility and risks associated with any modifications using WKORP manufactured products. All products manufactured by White Knuckle Off Road Products, LLC are for off-road use only.**

**The powder coated finish provided by WKORP will carry no warranty or guarantee. The powder coated finish is provided as a service. Any damage to the finish during shipping must be reported immediately. Any damage, wear, or anomalies incurred to the finish after receiving parts from WKORP are the responsibility of the buyer or user.**

**[www.white-knuckleoffroad.com](http://www.white-knuckleoffroad.com)**