



2000-2006 TOYOTA TUNDRA

Thank you for choosing White Knuckle Rock Sliders

Please read the instructions before beginning installation. Check hardware kit contents against content list below. Also, check the tools needed against the list below.

Hardware Kit

1-Driver Side Rock Slider
1-Passenger Side Rock Slider
16 each 1/2" x 1-1/2" Grade 8 Bolts, Nuts,
Flat Washers & Lock Washers
8 each 1/4" x 2" x 2" backing plate

Tools Needed

1/2" or 3/8" Drill
1/8", 1/4", & 1/2" Drill Bits
Center Punch and Hammer
3/4" Socket and Ratchet
3/4" Wrenches
2 Axle Stands
Small Jack
"C" Clamps

INSTALLATION INSTRUCTIONS

1. Place the axle stands directly under the rocker panel. Place the slider on the axle stands **Figure 1**.
2. The factory holes in the frame (4 on the vertical portion and 1 at the bottom front) should be aligned to allow the 1/2" bolts to go thru the mounting plates and the frame. The main rail should be level and around 1" below the rocker panel.
3. Begin with the front mounting plate first. Start threading a 1/2" bolt and lock washer thru the bottom front mounting plate and into the flat washer and nut **Figure 2**. Keep the bolt loose for now to allow for adjustment of the slider position.
4. Move the hard-lines (if necessary) out of the way enough to allow for the 1/4" x 2" x 2" backing plates and nuts on the inside vertical portion of the frame **Figure 3**. Keep all of the 1/2" fasteners loose to allow adjustment of the slider later.
5. Now adjust the slider front to rear to make sure it is in the desired position. Clamp the mounting plates to the bottom of the frame and tighten the 1/2" x 1-1/2" bolts thru the factory vertical frame holes. "C" clamps can be used or a bottle jack can be used to press the bottom of the mounting plate tight against the bottom of the frame to eliminate any gap between the frame and the mounting plate **Figure 4**.
6. Stand back to take a look at the slider in relation to the vehicle body. Make sure the rock slider is in the desired position, level, and no gaps between the frame and the mounting plates. **Mark** the 3 holes to be drilled on the underside of the frame thru the mounting plates and make sure you mark the exact center of each hole to be drilled. Find the marks on the frame and use the center punch on each of these marks for pre-drilling **Figure 5**.

7. Sharp drill bits will be needed. Drill an 1/8" pilot hole thru each of the marks, then with the 1/4" drill bit, and next with the 1/2" drill bit. Make sure to keep the drill perpendicular to the frame when drilling the holes **Figure 6**.
8. Start the bolts and lock washers through the bottom holes and tighten nuts and flat washers on the inside of the frame rail **Figure 7**.
9. Retighten all.

Figure 1



Figure 2



Figure 3

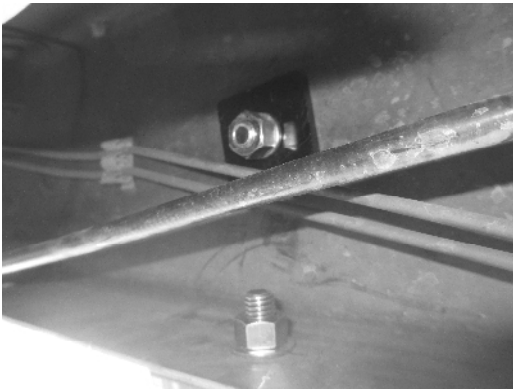


Figure 4



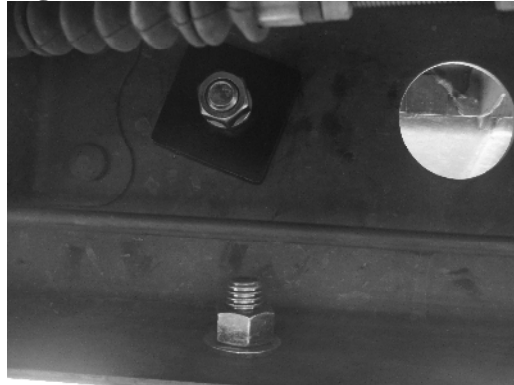
Figure 5



Figure 6



Figure 7



SAFETY FIRST

Observe proper safety procedures during installation. Improperly used tools and unsafe procedures can cause injury or death. Refer to manufacturers manuals for use and warnings of tools to be used. Modifications to your vehicle can cause dangerous conditions. The buyers and users of this product assume all risks associated with the installation and use of this product. All installations should be made by a qualified mechanic.

DISCLAIMER

White Knuckle Off Road Products, LLC stands behind all of our quality off-road fabricated products. WKORP will not be held responsible nor will we accept liability for failure of parts as a result of extreme off-road use. Minor modifications may be required to allow the installation of our products.

Modifications to your vehicle using products manufactured by WKORP may create dangerous conditions. Modifications to your vehicle are done at your own risk. WKORP will not accept responsibility or liability from damage or personal injury caused by installing or using installed products manufactured by WKORP whether intended or unintended. The buyer accepts all responsibility and risks associated with any modifications using WKORP manufactured products. All products manufactured by White Knuckle Off Road Products, LLC are for off-road use only.

The powder coated finish provided by WKORP will carry no warranty or guarantee. The powder coated finish is provided as a service. Any damage to the finish during shipping must be reported immediately. Any damage, wear, or anomalies incurred to the finish after receiving parts from WKORP are the responsibility of the buyer or user.

www.white-knuckleoffroad.com