



**JEEP Wrangler JK and Unlimited**

**Thank you for choosing White Knuckle Rock Sliders**

Please read the instructions before beginning installation. Check hardware kit contents against content list below. Also, check the tools needed against the list below.

#### **Hardware Kit**

1-Driver Side Rock Slider  
1-Passenger Side Rock Slider  
16 each 3/8"x 1" Self Threading Bolts  
2 each 12mm x 30mm Bolts & Washers (**Standard Trans**)

#### **Tools Needed**

3/8" Drill  
1/8" Drill Bit  
21/64" Drill Bit  
5/16" Drill Bit  
13/32" Drill Bit  
Center Punch and Hammer  
9/16" Socket and Ratchet  
17mm Socket  
Air Impact Wrench if Available  
2 Axle Stands  
Jack or High-Lift  
"C" Clamps

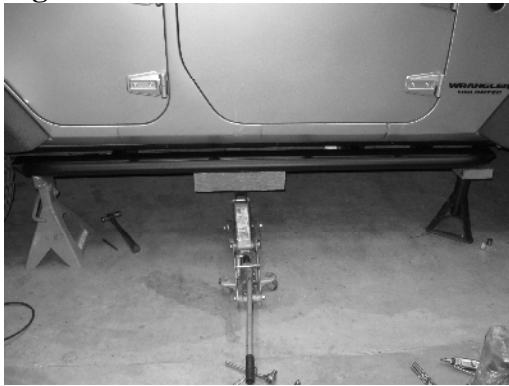
#### **INSTALLATION INSTRUCTIONS**

1. Remove the bolts that attach the OEM skid plate to the bottom side of each frame rail where the front mounting bracket of the slider will attach and loosen the one remaining bolt in the center of the skid plate (**Automatic Trans**). Place the axle stands or jack directly under the rocker panel. Place the Rock Slider on the axle stands or jack **Figure 1**. Line-up the single hole in the front mounting bracket with the threaded hole in the frame where the skid plate attaches. Begin threading the 12mm bolt thru the skid plate, slider, and frame sandwiching the slider mounting bracket between the skid plate and frame **Figure 2**. Clamp the rear mounting bracket to the frame in the desired position with the bottom of the "L" bracket snug under the frame. Now tighten the skid plate bolt to make the bottom of the front "L" bracket snug under the frame. The main rail should be level and around 1/2" to 3/4" below the rocker panel. "C" clamps should be as high as possible on the mounting bracket to eliminate any gap between the frame and the top of the bracket.
2. When the Rock Slider is in the desired position, level and no gaps between the frame and the bracket, mark the 2 holes to be drilled on the underside of the frame at the rear with the 13/32" drill bit by turning the bit back and forth by hand **Figure 3**. This will help you find the exact center of each hole. Remove the Rock Slider from the frame. Find the 2 marks on the frame made by the drill bit. Use the center punch on each of these marks for pre-drilling **Figure 4**.
3. 1/8" pilot holes should be drilled first. Drill the 2 bottom holes at the rear mounting bracket with the 21/64" drill bit. Make sure you use a quality-sharp drill bit because the

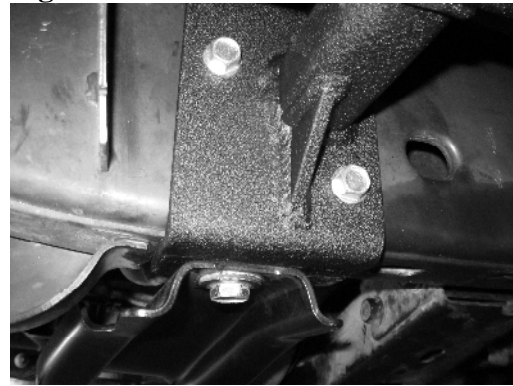
frame is very thick in the rear and center mounting locations. Make sure to keep the drill perpendicular to the frame when drilling the holes.

4. Using the 9/16" socket and ratchet or air impact wrench (recommended), begin the supplied 3/8" X 1" self-threading bolts. Keep the bolts perpendicular to the frame with significant pressure against the back of the ratchet as you begin cutting the threads in the frame **Figure 5**. Continue tightening the bolts until they are easy to turn. The impact wrench is best for this procedure if available. Do not attempt to unscrew the bolt until the threads have been completely cut.
5. Clamp the Rock Sliders back into position and ensure the holes line-up. Begin threading the bolts in the threaded holes and tighten. **DO NOT OVERTIGHTEN** or you might strip the threads you just cut.
6. Once the bottom bolts are tight, lift the sliders gently with the jack or High Lift until no gap is seen between the mounting bracket and frame. The 1/2" to 3/4" gap between the top of the slider and the bottom of the rocker panel should be reached **Figure 1**. Repeat steps 2 thru 5 for the remaining holes on the vertical portion of the mounting brackets using the 21/64" drill bit for the center & rear brackets and the 5/16" drill bit for the front brackets.

**Figure 1**



**Figure 2**



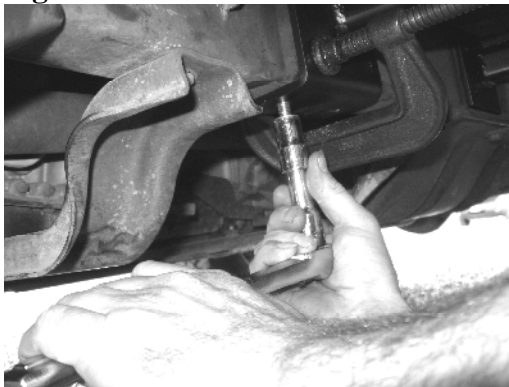
**Figure 3**



**Figure 4**



**Figure 5**



**Mounted**



## **SAFETY FIRST**

**Observe proper safety procedures during installation. Improperly used tools and unsafe procedures can cause injury or death. Refer to manufacturers manuals for use and warnings of tools to be used.**

**Modifications to your vehicle can cause dangerous conditions. The buyers and users of this product assume all risks associated with the installation and use of this product. All installations should be made by a qualified mechanic.**

## **DISCLAIMER**

**White Knuckle Off Road Products, LLC stands behind all of our quality off-road fabricated products. WKORP will not be held responsible nor will we accept liability for failure of parts as a result of extreme off-road use. Minor modifications may be required to allow the installation of our products.**

**Modifications to your vehicle using products manufactured by WKORP may create dangerous conditions. Modifications to your vehicle are done at your own risk. WKORP will not accept responsibility or liability from damage or personal injury caused by installing or using installed products manufactured by WKORP whether intended or unintended. The buyer accepts all responsibility and risks associated with any modifications using WKORP manufactured products. All products manufactured by White Knuckle Off Road Products, LLC are for off-road use only.**

**The powder coated finish provided by WKORP will carry no warranty or guarantee. The powder coated finish is provided as a service. Any damage to the finish during shipping must be reported immediately. Any damage, wear, or anomalies incurred to the finish after receiving parts from WKORP are the responsibility of the buyer or user.**

**[www.white-knuckleoffroad.com](http://www.white-knuckleoffroad.com)**