

WHITE KNUCKLE



OFF ROAD PRODUCTS®

OFF ROAD VEHICLE BODY PROTECTION

RAM POWER WAGON & 2500 Gas 2019-Newer

Thank you for choosing White Knuckle Rock Sliders

Please read instructions before beginning installation. Check hardware kit contents against content list below. Also, check the tools needed against the list below.

Install time: 2 hours
1 helper recommended

Hardware Kit

1-Driver Side Rock Slider
1-Passenger Side Rock Slider
4 – 1/2" X 2 X 9-7/16" Backing Plates (3rd & Rear)
2 – 1/2" X 2 X 9-11/16" Backing Plates (2nd)
2 – 1/2" X 4 X 9-9/16" Backing Plates (Front)

Tools Needed

Floor Jack
2 Axle Stands
3/4" Wrench and/or
Ratchet and 3/4" Socket

2 – 1/2" X 4-1/2" Grade 8 Bolts with Nylock Nut and Flat Washers
18– 1/2" X 5" Grade 8 Bolts, Nuts, Flat Washers, and Lock Washers

INSTALLATION INSTRUCTIONS

1. Chock your wheels to prevent your truck from rolling. Begin with the passenger side first as it is the easier of the two sides. Remove the plastic trim at the bottom of the bed at the front **Figure 1**. Squeeze the plastic attachment tabs with a pair of needle nose pliers to remove.
2. Place the axle stands directly under the rocker panel. Place the rock slider on the axle stands **Figure 2**. Place another axle stand or floor jack under one of the mounting plates or legs to keep the slider from swinging out and to provide more stability.
3. **Driver side only** – A couple of the plastic snap-in fasteners that attach the wire loom to the top of the frame rail will need to be removed or cut to provide slack in the loom which will allow the backing plates in the front and 2nd positions to be installed **Figure 3**. Be sure the wire loom is protected from wear if against the backing plates with rubber and/or electrical tape.
4. Position the rock slider mounting plates flush against the frame so that they are in a position high enough to push the bolts from the outboard toward the inboard of the vehicle frame and through the backing plate. **NOTE:** Slide the backing plates up from the bottom against the inside of the frame to insure brake lines, wiring, etc. will not be pinched by the backing plate **Figure 4**. Next, push the bolts through the holes in the mounting plates (begin with the Front mount then work your way back) **NOTE for Front mount:** The top bolts should be installed backwards from the inboard side of the frame to the outboard side of the frame **Figure 6**. Place the flat washers, lock washers and nuts on the bolts but do not tighten at this point. **NOTE:** The two 4-1/2" bolts are for the 2nd mount on both the driver and passenger sides at the top position and should be installed backwards from the inboard side of the frame to the outboard side of the frame **Figure 5**.
5. Once all of the washers and nuts have been started on the bolts, center the slider relative to the rocker panel. Keep a consistent gap (around 1") between the slider and the bottom of the rocker panel. The gap can be adjusted by simply lifting one end (a bottle jack or floor jack used under the mount to be

adjusted works best). Tighten all of the nuts rotating from top to bottom to ensure the backing plate stays straight. Finally, recheck each for tightness.

6. **NOTE:** The temporary removal of the floor bins at the center mounting position of the sliders as well as the gas tank skid plate may save time and allow for more space to work but is not necessary to install the sliders.
7. **NOTE:** If you notice a creaking sound while driving, it is most likely the top of the front position backing plate making contact with the bottom of the cab. Loosen the bolts and drop the backing plate until it does not make contact. Make sure the top bolt is level to the top of the frame or slightly dipping downward toward the backing plate.

Figure 1



Figure 2



Figure 3

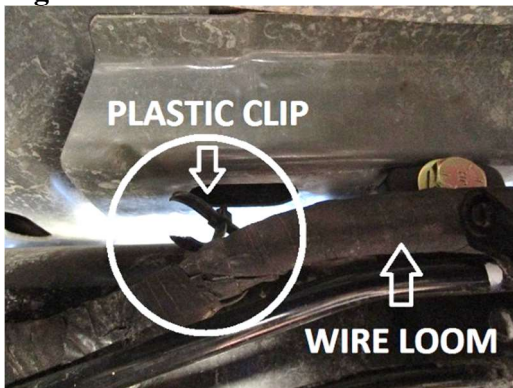


Figure 4



Figure 5



Figure 6



SAFETY FIRST

Observe proper safety procedures during installation. Improperly used tools and unsafe procedures can cause injury or death. Refer to manufacturers manuals for use and warnings of tools to be used. Modifications to your vehicle can cause dangerous conditions. The buyers and users of this product assume all risks associated with the installation and use of this product. All installations should be made by a qualified mechanic.

DISCLAIMER

White Knuckle Off Road Products, LLC stands behind all of our quality off-road fabricated products. WKORP will not be held responsible nor will we accept liability for failure of parts as a result of extreme off-road use. Minor modifications may be required to allow the installation of our products.

Modifications to your vehicle using products manufactured by WKORP may create dangerous conditions. Modifications to your vehicle are done at your own risk. WKORP will not accept responsibility or liability from damage or personal injury caused by installing or using installed products manufactured by WKORP whether intended or unintended. The buyer accepts all responsibility and risks associated with any modifications using WKORP manufactured products. All products manufactured by White Knuckle Off Road Products, LLC are for off-road use only.

The powder coated finish provided by WKORP will carry no warranty or guarantee. The powder coated finish is provided as a service. Any damage to the finish during shipping must be reported immediately. Any damage, wear, or anomalies incurred to the finish after receiving parts from WKORP are the responsibility of the buyer or user.

www.white-knuckleoffroad.com