



TOYOTA TACOMA 2016-Newer

Thank you for choosing White Knuckle Rock Sliders

Please read the instructions before beginning installation. Check hardware kit contents against content list below. Also, check the tools needed against the list below.

Hardware Kit

1-Driver Side Rock Slider
1-Passenger Side Rock Slider
5 each 1/2" x 1-1/2" Grade 8 Bolts,
Flat Washers & Lock Washers
7 each 1/2" x 2" Grade 8 Bolts,
Flat Washers & Lock Washers
8 Grade 8 Hex Nuts
5 each 1/4" x 2" x 2" backing plate
1 each 3/16" x 1-1/2" x 2" backing plate
2 each 1/4" x 2 x 2-7/8" backing plate w/welded nut
2 each 1/4" x 2 x 2 backing plate w/welded nut and wire

Tools Needed

1/2" or 3/8" Drill
1/8", 1/4", & 1/2" Drill Bits
Center Punch and Hammer
3/4" Socket and Ratchet
3/4" Wrench
12mm Wrench or Socket
2 Axle Stands
Small Jack
"C" Clamps

INSTALLATION INSTRUCTIONS

1. Slide the 1/4" x 2" x 2-7/8" w/welded nut into the rectangular slotted hole in the frame where the bottom of the front slider mounting plate will be attached **Figure 1**. Place the axle stands or jack directly under the rocker panel. Place the slider on the axle stands or jack **Figure 2**.
2. The factory holes in the frame should be aligned to allow the 1/2" bolts to go thru the mounting plates and the frame. The main rail should be level and around 1/2" to 1" below the rocker panel.
3. Start threading a 1/2" x 2" bolt, flat washer, lock washer, and 1/4" x 2 x 2 backing plate thru the bottom portion of the front mounting plate and the backing plate with the welded nut **Figure 3**. Keep the bolt loose for the time being to allow for adjustment of the slider position.
4. Continuing at the front mount, move the hard-lines (if necessary) out of the way enough to reach into the open end of the frame with the backing plate with the welded nut and wire to begin the 1/2" x 2" bolt, flat washer, and lock washer **Figure 4**. Keep all of the 1/2" fasteners loose to allow adjustment of the slider later.

5. To access the mounting hole in the frame at the *center mounting plate* on the *driver side*, the electronic module will need to be temporarily removed **Figure 5**. Slide the 1/2" x 1-1/2" bolt with ground head (to allow for hard lines) through the 3/16" x 1-1/2" x 2" backing plate with no washers and then through the frame from the inside of the frame rail **Figure 6**. Use a flat washer, lock washer, and nut from the outside of the frame rail. You may need to slightly bend the hard lines along the inside of the frame to allow the 1/2" bolt to be put in place.
6. Next, start the other 1/2" bolts through the factory frame holes. The center mounting plates on the passenger side as well as the rear mounting plates on both driver and passenger sides that utilize the factory frame holes use a 1/2" x 2" bolt, lock washer, flat washer, hex nuts, and 1/4" x 2" x 2" backing plates.
7. Now adjust the slider front to rear to make sure it is in the desired position. Clamp the mounting plates to the bottom of the frame and tighten the 1/2" x 2" bolts thru the factory vertical frame holes. "C" clamps can be used or a bottle jack can be used to press the bottom of the mounting plate tight against the bottom of the frame to eliminate any gap between the frame and the mounting plate.
8. Stand back to take a look at the slider in relation to the vehicle body. Make sure the rock slider is in the desired position, level, and no gaps between the frame and the mounting plates. **Mark** the holes to be drilled on the underside of the frame with the 1/2" drill bit by turning the bit back and forth by hand **Figure 7**. This will help you find the center of each hole. Find the marks on the frame made by the drill bit. Use the center punch on each of these marks for pre-drilling **Figure 8**.
9. Sharp drill bits will be needed. Drill an 1/8" pilot hole thru each of the marks, then with the 1/4" drill bit, and next with the 1/2" drill bit. Make sure to keep the drill perpendicular to the frame when drilling the holes **Figure 9**.
10. Start the bolts and lock washers through the bottom holes and tighten nuts and flat washers on the inside of the frame rail **Figure 10**
11. Finish by tightening all the bolts with a ratchet or wrench and reinstall the electronic module.

Figure 1



Figure 2



Figure 3



Figure 4



Figure 5

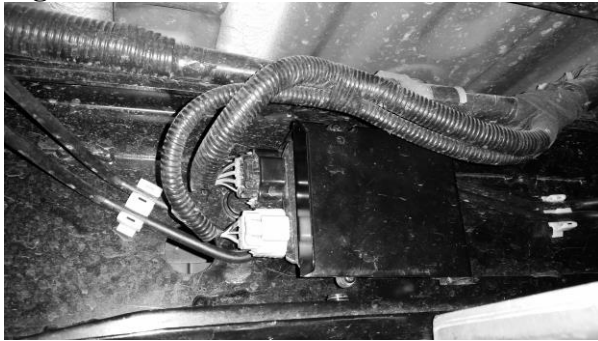


Figure 6



Figure 7



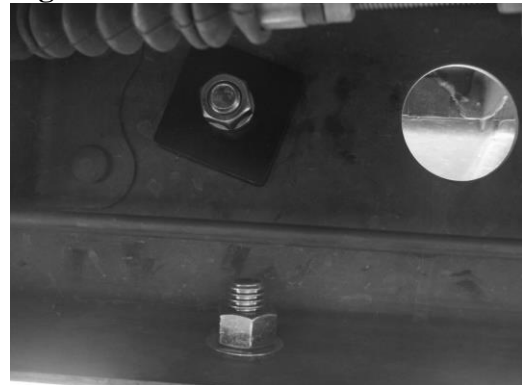
Figure 8



Figure 9



Figure 10



SAFETY FIRST

Observe proper safety procedures during installation. Improperly used tools and unsafe procedures can cause injury or death. Refer to manufacturers manuals for use and warnings of tools to be used. Modifications to your vehicle can cause dangerous conditions. The buyers and users of this product assume all risks associated with the installation and use of this product. All installations should be made by a qualified mechanic.

DISCLAIMER

White Knuckle Off Road Products, LLC stands behind all of our quality off-road fabricated products. WKORP will not be held responsible nor will we accept liability for failure of parts as a result of extreme off-road use. Minor modifications may be required to allow the installation of our products. Modifications to your vehicle using products manufactured by WKORP may create dangerous conditions. Modifications to your vehicle are done at your own risk. WKORP will not accept responsibility or liability from damage or personal injury caused by installing or using installed products manufactured by WKORP whether intended or unintended. The buyer accepts all responsibility and risks associated with any modifications using WKORP manufactured products. All products manufactured by White Knuckle Off Road Products, LLC are for off-road use only.

The powder coated finish provided by WKORP will carry no warranty or guarantee. The powder coated finish is provided as a service. Any damage to the finish during shipping must be reported immediately. Any damage, wear, or anomalies incurred to the finish after receiving parts from WKORP are the responsibility of the buyer or user.

www.white-knuckleoffroad.com