

**DODGE POWER WAGON / DIESEL 2500/3500 2003-2009**

**Thank you for choosing White Knuckle Rock Sliders**

Please read instructions before beginning installation. Check hardware kit contents against content list below. Also, check the tools needed against the list below.

**Install time:** 2 hours

1 helper recommended

#### **Hardware Kit**

1-Driver Side Rock Slider

1-Passenger Side Rock Slider

4 – 1/2" X 2 X 9-7/16" Backing Plate Front (1st) and Rear (4th)

2 – 1/2" X 2 X 9-5/8" Backing Plate 2<sup>nd</sup> from Front

2 – 1/2" X 2 X 9-11/16" Backing Plate 3<sup>rd</sup> from Front

8 – 1/2" X 4-1/2" Grade 8 Bolts

8 – 1/2" X 5" Grade 8 Bolts for Mounts 2<sup>nd</sup> and 3<sup>rd</sup> from Front

16 – 1/2" Nuts, Flat Washers, and Lock Washers

#### **Tools Needed**

Floor Jack

2 Axle Stands

3/4" Wrench and/or

Ratchet and Socket

9/16" Socket

1/2" Socket

#### **INSTALLATION INSTRUCTIONS**

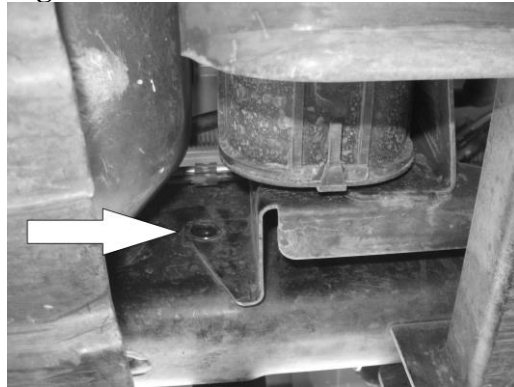
1. Place the axle stands directly under the rocker panel. Place the rock slider on the axle stands **Figure 1**.
2. **Note for Driver side** - Remove the canister bracket bolt with the 1/2" socket and ratchet from the inside of the driver side frame directly in front of the gas tank **Figure 2**. Remove 3 bolts on fuel tank skid plate to allow the rear backing plate to be put in place **Figure 3**.
3. Use the floor jack for minor adjusting of the position of the slider. Place the floor jack under the center of the rock slider and lift until the mounting plates are in position to push the bolts from the outside toward the inside of the vehicle frame and through the backing plate. **NOTE:** Slide the backing plates up from the bottom against the inside of the frame to ensure brake lines, wiring, etc. will not be pinched by the backing plate **Figure 4**. Front and rear backing plates are 9-7/16" long; 3<sup>rd</sup> from front are 9-11/16" long; 2<sup>nd</sup> from front are 9-5/8" long with the backing plate hole closest to the edge of the plate being positioned at the top of the frame to avoid rubbing on the bottom of the body tub. Next, push the bolts through the holes in the mounting plates. **NOTE:** The rear bottom mount bolt closest to the gas tank should be installed backwards to avoid any possible rubbing. Place the flat washers, lock washers and nuts on the bolts but do not tighten at this point.

- Once all the bolts with washers have been started, center the slider relative to the rocker panel. Keep a consistent gap (around 1/2" to 1") between the slider and the bottom of the rocker panel. The gap can be adjusted by simply lifting one end. Tighten all the nuts rotating from top to bottom to ensure the backing plate stays straight. Finally, recheck each for tightness.

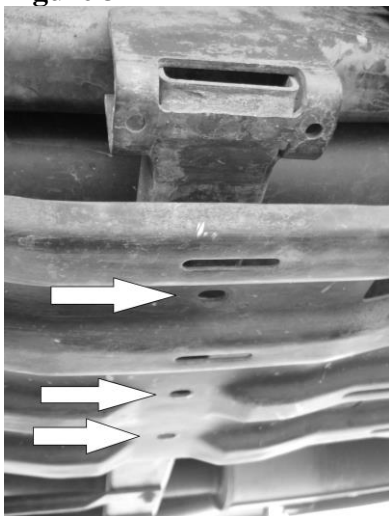
**Figure 1**



**Figure 2**



**Figure 3**



**Figure 4**



**Mounted**



## **SAFETY FIRST**

**Observe proper safety procedures during installation. Improperly used tools and unsafe procedures can cause injury or death. Refer to manufacturers manuals for use and warnings of tools to be used. Modifications to your vehicle can cause dangerous conditions. The buyers and users of this product assume all risks associated with the installation and use of this product. All installations should be made by a qualified mechanic.**

## **DISCLAIMER**

**White Knuckle Off Road Products, LLC stands behind all of our quality off-road fabricated products. WKORP will not be held responsible nor will we accept liability for failure of parts as a result of extreme off-road use. Minor modifications may be required to allow the installation of our products.**

**Modifications to your vehicle using products manufactured by WKORP may create dangerous conditions. Modifications to your vehicle are done at your own risk. WKORP will not accept responsibility or liability from damage or personal injury caused by installing or using installed products manufactured by WKORP whether intended or unintended. The buyer accepts all responsibility and risks associated with any modifications using WKORP manufactured products. All products manufactured by White Knuckle Off Road Products, LLC are for off-road use only.**

**The powder coated finish provided by WKORP will carry no warranty or guarantee. The powder coated finish is provided as a service. Any damage to the finish during shipping must be reported immediately. Any damage, wear, or anomalies incurred to the finish after receiving parts from WKORP are the responsibility of the buyer or user.**

**[www.white-knuckleoffroad.com](http://www.white-knuckleoffroad.com)**