

WHITE KNUCKLE



OFF ROAD PRODUCTS®

OFF ROAD VEHICLE BODY PROTECTION

FORD Ranger 2019-Newer

Thank you for choosing White Knuckle Rock Sliders

Please read instructions before beginning installation. Check hardware kit contents against content list below.

Also, check the tools needed against the list below.

Install time: 1 hour

1 helper recommended

Hardware Kit

1-Driver Side Rock Slider

1-Passenger Side Rock Slider

2 – 3/8" X 3" X 7-7/8" Backing Plates (Front)

2 – 3/8" X 2" X 7-7/8" Backing Plates (Rear)

2 – 3/8" X 2" X 8-5/8" Backing Plates (Center)

12 – 1/2" X 5-1/2" Grade 8 Bolts

Nuts, Flat Washers, and Lock Washers

Tools Needed

Floor Jack

2 Axle Stands

3/4" Wrench and/or

Ratchet and Socket

Slotted Screwdriver

INSTALLATION INSTRUCTIONS

1. Chock the tires to keep the vehicle from rolling. On the driver side front mounting position, you will need to unsnap the plastic clip from the frame that holds the lower wire loom near the bottom of the frame. This can be done easily with a flat screwdriver **Figure 1** and will allow the front backing plate to be pushed up from the bottom of the frame.
2. Place the axle stands directly under the rocker panel then place the rock slider on the axle stands **Figure 2**.
3. If needed, use the floor jack for minor adjusting of the position of the slider. Place the floor jack under the center of the rock slider and lift until the mounting plates are in position to push the bolts through the mounting plate, factory vehicle frame hole, and the backing plate. **NOTE:** Slide the backing plates up from the bottom against the inside of the frame to ensure brake lines, wiring, etc. will not be pinched by the backing plate **Figure 3**.
4. Next, push the bolts through the holes in the mounting plates. **NOTE:** Reverse the bolt direction for both driver and passenger center mount top holes **Figure 4**.
5. Once all the bolts have been started, center the slider relative to the rocker panel **Figure 5**. Keep a consistent gap (around 1/2" to 1") between the slider and the bottom of the rocker panel. The gap can be adjusted by simply lifting one end of the slider. Tighten all the nuts - rotating from top to bottom to ensure the backing plate remains aligned. Finally, recheck each for tightness. 60 foot pounds is adequate. **NOTE:** Verify that you have a 1/2" gap or more between the very front of the rock slider and the pinch seam to allow for upward flex of the slider **Figure 5**.

Figure 1

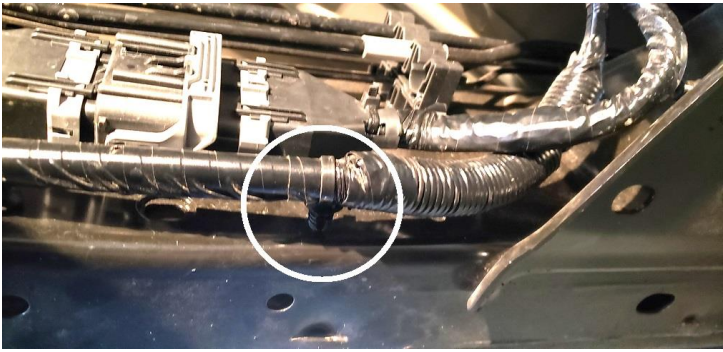


Figure 2



Figure 3

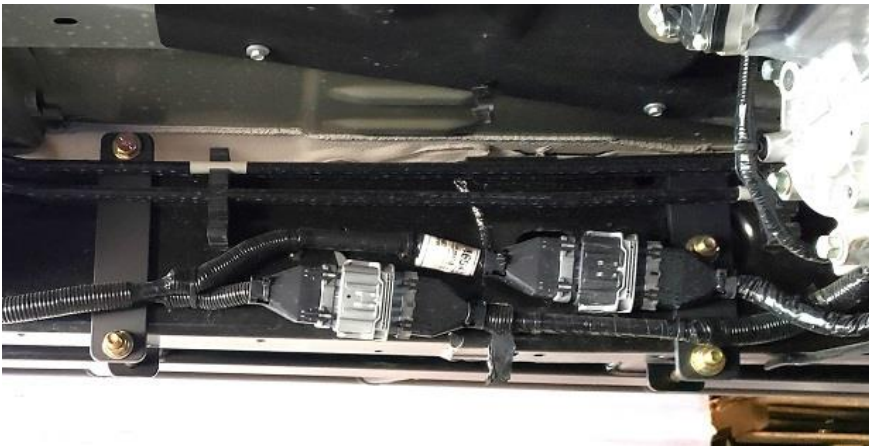


Figure 4

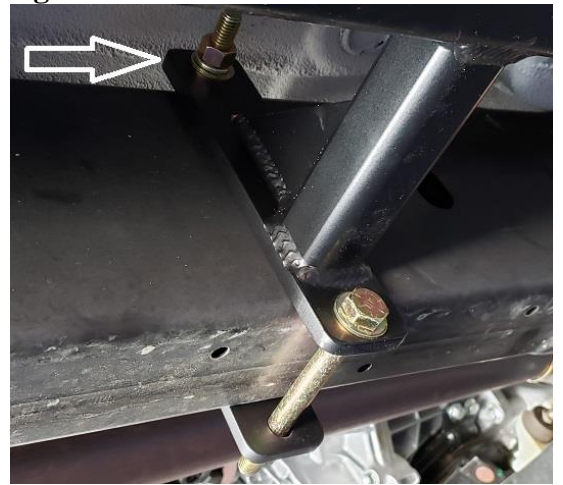
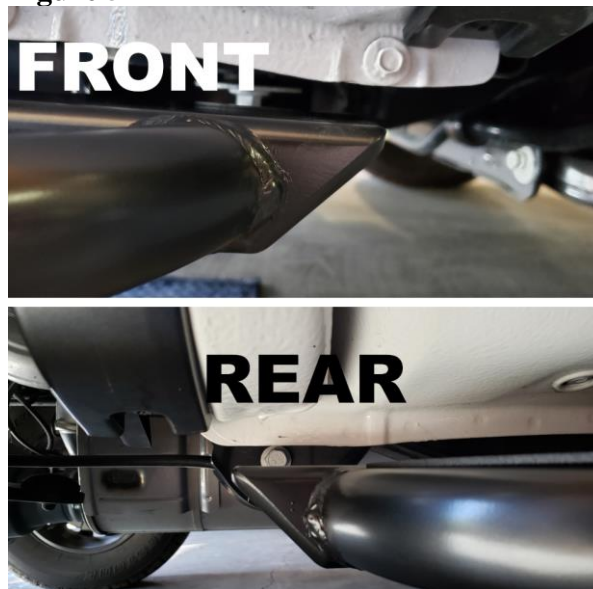


Figure 5



SAFETY FIRST

Observe proper safety procedures during installation. Improperly used tools and unsafe procedures can cause injury or death. Refer to manufacturers manuals for use and warnings of tools to be used. Modifications to your vehicle can cause dangerous conditions. The buyers and users of this product assume all risks associated with the installation and use of this product. All installations should be made by a qualified mechanic.

DISCLAIMER

White Knuckle Off Road Products, LLC stands behind all of our quality off-road fabricated products. WKORP will not be held responsible nor will we accept liability for failure of parts as a result of extreme off-road use. Minor modifications may be required to allow the installation of our products. Modifications to your vehicle using products manufactured by WKORP may create dangerous conditions. Modifications to your vehicle are done at your own risk. WKORP will not accept responsibility or liability from damage or personal injury caused by installing or using installed products manufactured by WKORP whether intended or unintended. The buyer accepts all responsibility and risks associated with any modifications using WKORP manufactured products. All products manufactured by White Knuckle Off Road Products, LLC are for off-road use only. The powder coated finish provided by WKORP will carry no warranty or guarantee. The powder coated finish is provided as a service. Any damage to the finish during shipping must be reported immediately. Any damage, wear, or anomalies incurred to the finish after receiving parts from WKORP are the responsibility of the buyer or user.

www.white-knuckleoffroad.com