

WHITE KNUCKLE



OFF ROAD PRODUCTS®

OFF ROAD VEHICLE BODY PROTECTION

Ford F-150 and Raptor 2018-2020

Thank you for choosing White Knuckle Rock Sliders

Please read instructions before beginning installation. Check hardware kit contents against content list below. Also, check the tools needed against the list below.

Install time: 2 hours

1 helper recommended

Hardware Kit

- 1-Driver Side Rock Slider
- 1-Passenger Side Rock Slider
- 2- 1/2" X 2 X 10-1/4" Backing Plates with Welded Plates (FRONT)
- 2- 3/8" X 2 X 11-1/4" Backing Plate (2ND)
- 2- 1/2" X 2 X 9-1/2" Backing Plates (3RD)
- 1- 1/2" X 2 X 11" Backing Plate (REAR PASS)
- 1- 3/8" X 2 X 11-1/4" Backing Plate w/ Welded Nut (REAR DRVR)
- 4- 1/2" X 7" Grade 8 Bolts (Front)
- 4- 1/2" X 6" Grade 8 Bolts (2nd)
- 4- 1/2" X 5-1/2" Grade 8 Bolts (3rd)
- 1- 1/2" X 5-1/2" Grade 8 Bolt (Driver Rear Bottom)
- 1- 1/2" X 5" Grade 8 Bolt (Driver Rear Top)
- 2- 1/2" X 6" Grade 8 Bolts (Rear Passenger)
- + Nuts, Flat Washers, and Lock Washers
- 1- 3/8" Plastic Spacers (with two-sided tape) for Hardline Clip
- 4- Adhesive Zip Tie Mounting Base and Zip Ties

Tools Needed

- Floor Jack
- 2 Axle Stands
- 3/4" Wrench and/or Ratchet and Socket
- 10mm Wrench or Socket
- 13mm Socket
- Slotted Screwdriver

INSTALLATION INSTRUCTIONS

1. Chock the tires to keep the vehicle from rolling. On the driver side near the Front and 2nd mounting positions, you will need to remove two of the plastic clips from the frame that hold the wire loom to the frame **Figure 1**. This can be done easily by prying with a slotted screwdriver. On the passenger side near the second mounting position, you will need to remove one of the plastic clips from the frame that holds the wire loom to the frame and also remove the ground wire bolt from the frame **Figure 2** (if equipped). This will allow the mounting plates to be pushed up from the bottom of the frame. Reinstall the ground cable bolt when finished.
2. On the driver side rear mounting position, you will need to remove the plastic clip from the frame that holds the hard lines on the top of the frame **Figure 3**. This can be done easily with a slotted screwdriver. Clean the area of the frame under the hardline plastic clip, expose the adhesive on the plastic spacer and attach the plastic spacer between the frame and the

hardline clip **Figure 4**. This will allow the top bolt to be pushed through the mounting plate and rest on the top of the frame.

3. Remove the gas tank skid plate (4 nuts) if equipped to allow the rear bottom bolt to be put into place. Reinstall when finished.
4. Place the axle stands directly under the rocker panel. Place the rock slider on the axle stands **Figure 5**.
5. Place the floor jack under the center of the rock slider and gently lift the slider while keeping the mounting plates between the frame and hardlines/wire loom until the mounting plates are in position to push the bolts over the top of the frame at the 2nd and rear mounts and into the backing plates **Figure 6**. Next, push the remaining bolts through the holes in the mounting and backing plates. **NOTE:** Reverse the bolt direction for the rear bottom slider mounts to ensure the bolt does not contact the gas tank **Figure 7**.
6. Once all the bolts with washers have been started, center the slider relative to the rocker panel. Keep a consistent gap (around 1/2" to 1") between the slider and the bottom of the rocker panel. The gap can be adjusted by simply lifting one end. Tighten all the nuts rotating from top to bottom to ensure the backing plate stays straight. Finally, recheck each for tightness. 65 ft pounds should be sufficient.
7. Install the provided wire loom zip tie mounts and zip ties to the wire loom where it will be safe from rubbing **Figures 8 & 9**.

Figure 1

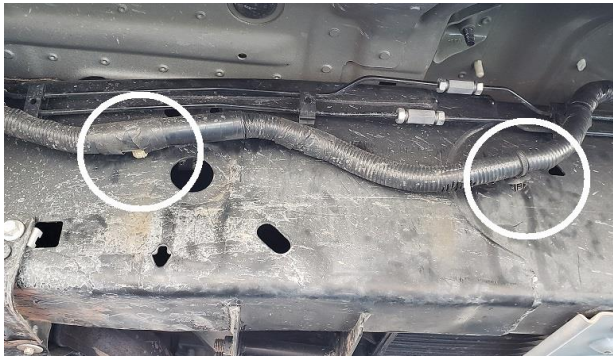


Figure 2



Figure 3

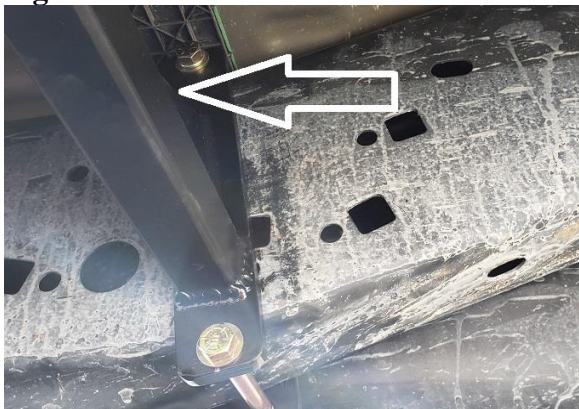


Figure 4



Figure 5



Figure 6



Figure 7



Figure 8

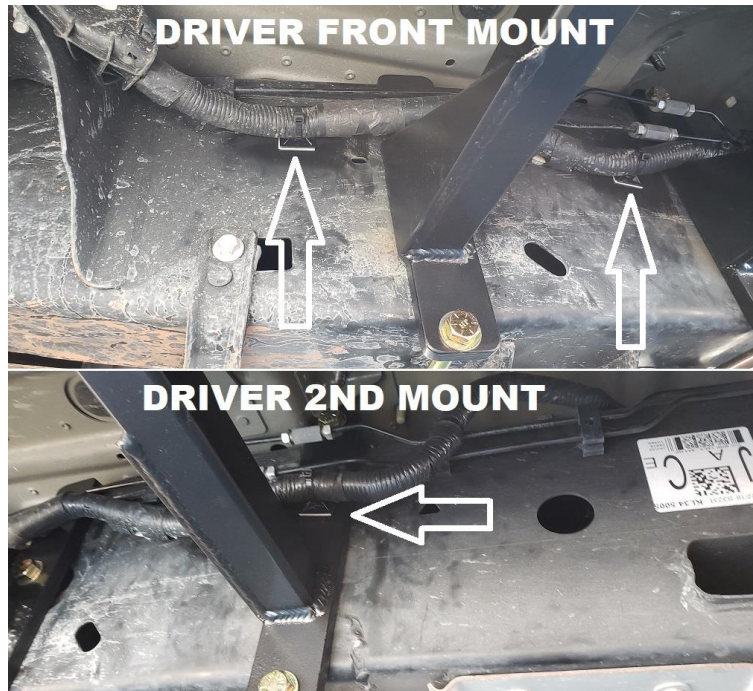
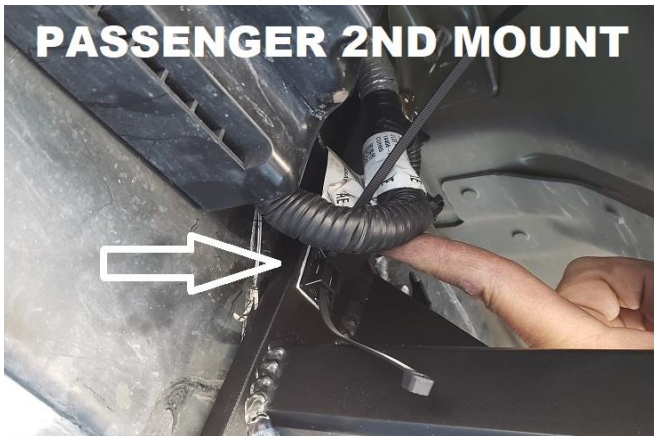


Figure 9



SAFETY FIRST

Observe proper safety procedures during installation. Improperly used tools and unsafe procedures can cause injury or death. Refer to manufacturers manuals for use and warnings of tools to be used.

Modifications to your vehicle can cause dangerous conditions. The buyers and users of this product assume all risks associated with the installation and use of this product. All installations should be made by a qualified mechanic.

DISCLAIMER

White Knuckle Off Road Products, LLC stands behind all of our quality off-road fabricated products. WKORP will not be held responsible nor will we accept liability for failure of parts as a result of extreme off-road use. Minor modifications may be required to allow the installation of our products.

Modifications to your vehicle using products manufactured by WKORP may create dangerous conditions. Modifications to your vehicle are done at your own risk. WKORP will not accept responsibility or liability from damage or personal injury caused by installing or using installed products manufactured by WKORP whether intended or unintended. The buyer accepts all responsibility and risks associated with any modifications using WKORP manufactured products. All products manufactured by White Knuckle Off Road Products, LLC are for off-road use only.

The powder coated finish provided by WKORP will carry no warranty or guarantee. The powder coated finish is provided as a service. Any damage to the finish during shipping must be reported immediately. Any damage, wear, or anomalies incurred to the finish after receiving parts from WKORP are the responsibility of the buyer or user.

www.white-knuckleoffroad.com