

WHITE KNUCKLE



OFF ROAD PRODUCTS®

OFF ROAD VEHICLE BODY PROTECTION

Ford F-150 and Raptor 2015-2022

Thank you for choosing White Knuckle Rock Sliders

Please read instructions before beginning installation. Check hardware kit contents against content list below.
Also, check the tools needed against the list below.

Install time: 2 hours

1 helper recommended

Hardware Kit

- 1-Driver Side Rock Slider
- 1-Passenger Side Rock Slider
- 2- 1/2" X 2 X 10-1/4" Backing Plates with Welded Plates (FRONT)
- 2- 3/8" X 2 X 11-1/4" Backing Plate (2ND)
- 2- 1/2" X 2 X 9-1/2" Backing Plates (3RD)
- 1- 1/2" X 2 X 11" Backing Plate (REAR PASS)
- 1- 3/8" X 2 X 11-1/4" Backing Plate w/ Welded Nut (REAR DRIVER)
- 4- 1/2" X 7" Grade 8 Bolts (Front)
- 4- 1/2" X 6" Grade 8 Bolts (2nd)
- 4- 1/2" X 5-1/2" Grade 8 Bolts (3rd)
- 1- 1/2" X 5-1/2" Grade 8 Bolt (Driver Rear Bottom)
- 1- 1/2" X 5" Grade 8 Bolt (Driver Rear Top)
- 2- 1/2" X 6" Grade 8 Bolts (Rear Passenger)
+ Nuts, Flat Washers, and Lock Washers
- 1- 3/8" Plastic Spacers (with two-sided tape) for Hardline Clip
- 4- Adhesive Zip Tie Mounting Base and Zip Ties

Tools Needed

- Floor Jack
- 2 Axle Stands
- 3/4" Wrench and/or
Ratchet and Socket
- 10mm Wrench or Socket
- 13mm Socket
- Slotted Screwdriver
- 2021-Newer** 9/16" Drill Bit

INSTALLATION INSTRUCTIONS

1. Chock the tires to keep the vehicle from rolling. On the driver side near the Front and 2nd mounting positions, you will need to remove two of the plastic clips from the frame that hold the wire loom to the frame **Figure 1**. This can be done easily by prying with a slotted screwdriver. On the passenger side near the second mounting position, you will need to remove one of the plastic clips from the frame that holds the wire loom to the frame and also remove the ground wire bolt from the frame **Figure 2** (if equipped). This will allow the mounting plates to be pushed up from the bottom of the frame. Reinstall the ground cable bolt when finished.
2. On the driver side rear mounting position, you will need to remove the plastic clip from the frame that holds the hard lines on the top of the frame **Figure 3**. This can be done easily with a slotted screwdriver. Clean the area of the frame under the hardline plastic clip, expose the adhesive on the plastic spacer and attach the plastic spacer between the frame and the hardline clip **Figure 4**. This will allow the top bolt to be pushed through the mounting plate and rest on the top of the frame.
3. Remove the gas tank skid plate (4 nuts) if equipped to allow the rear bottom bolt to be put into place. Reinstall when finished.
4. Place the axle stands directly under the rocker panel. Place the rock slider on the axle stands **Figure 5**.

5. Place the floor jack under the center of the rock slider and gently lift the slider while keeping the mounting plates between the frame and hardlines/wire loom until the mounting plates are in position to push the bolts over the top of the frame at the 2nd and rear mounts and into the backing plates **Figure 6**. Next, push the remaining bolts through the holes in the mounting and backing plates. **NOTE:** Reverse the bolt direction for the rear bottom slider mounts to ensure the bolt does not contact the gas tank **Figure 7**.
6. Once all the bolts with washers have been started, center the slider relative to the rocker panel. Keep a consistent gap (around 1/2" to 1") between the slider and the bottom of the rocker panel. The gap can be adjusted by simply lifting one end. Tighten all the nuts rotating from top to bottom to ensure the backing plate stays straight. Finally, recheck each for tightness. 65 ft pounds should be sufficient.
7. Install the provided wire loom zip tie mounts and zip ties to the wire loom where it will be safe from rubbing **Figures 8 & 9**.
8. **2021-Newer Models** – One hole will need to be drilled in the inboard side of the frame at the 3rd mount on the driver's side. Install and tighten all the bolts and backing plates with the slider in the desired position. Install and tighten the 3rd mount backing plate. Mark the frame through the top hole in the backing plate to be drilled and remove the backing plate **Figure 10**. Drill the hole to 9/16" beginning with an 1/8" bit and graduating to a larger size and finally to 9/16" **Figure 11**. Re-install the 3rd mount backing plate.

Figure 1



Figure 2



Figure 3

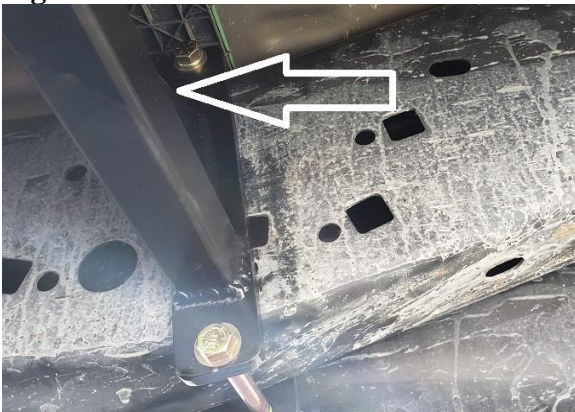


Figure 4



Figure 5



Figure 6



Figure 7



Figure 8

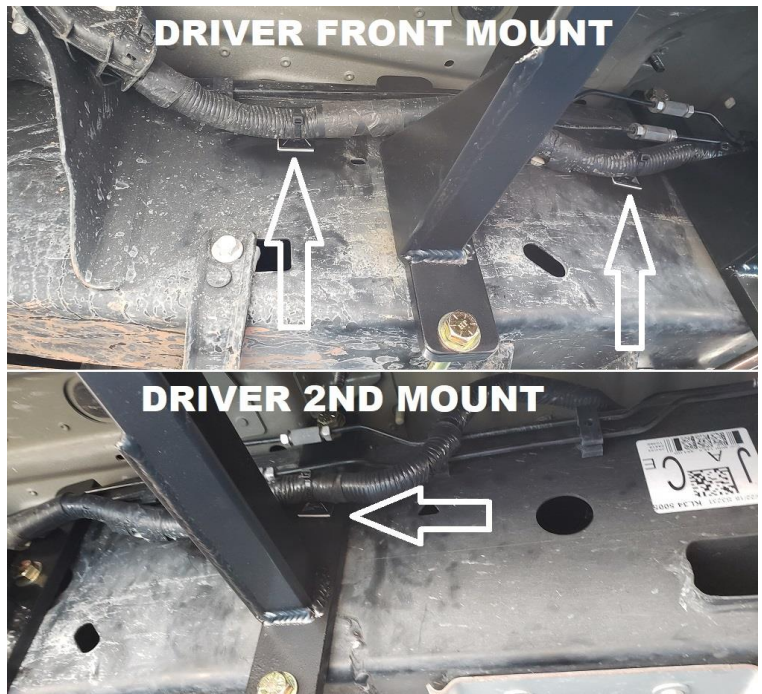


Figure 9

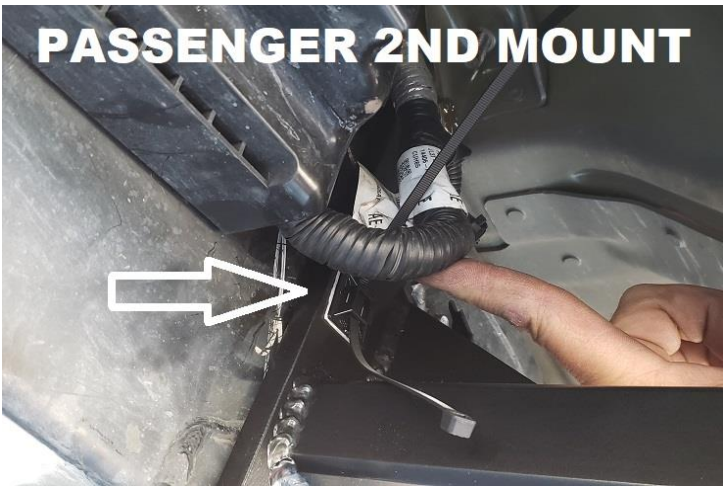


Figure 10



Figure 11



SAFETY FIRST

Observe proper safety procedures during installation. Improperly used tools and unsafe procedures can cause injury or death. Refer to manufacturers manuals for use and warnings of tools to be used. Modifications to your vehicle can cause dangerous conditions. The buyers and users of this product assume all risks associated with the installation and use of this product. All installations should be made by a qualified mechanic.

DISCLAIMER

White Knuckle Off Road Products, LLC stands behind all of our quality off-road fabricated products. White Knuckle Off Road Products, LLC will not be held responsible nor will we accept liability for failure of parts as a result of extreme off-road use. Minor modifications may be required to allow the installation of our products. Modifications to your vehicle using products manufactured by White Knuckle Off Road Products, LLC may create dangerous conditions. Modifications to your vehicle are done at your own risk. White Knuckle Off Road Products, LLC will not accept responsibility or liability from damage or personal injury caused by installing or using installed products manufactured by White Knuckle Off Road Products, LLC whether intended or unintended. The buyer/user accepts all responsibility and risks associated with any modifications and use of White Knuckle Off Road Products, LLC manufactured products. All products manufactured by White Knuckle Off Road Products, LLC are for off-road use only.

POWDER COAT FINISH

The powder coat finish provided by White Knuckle Off Road Products, LLC will carry NO warranty or guarantee of any kind. The powder coat finish is provided as a service only. Any damage to the finish during shipping is the responsibility of the delivery company and NOT the responsibility of White Knuckle Off Road Products, LLC. Any damage incurred during shipping MUST be noted on the Bill Of Lading or to UPS at the time of delivery. The delivery companies will not honor any claims made after the product has been delivered and damage had not been noted at the time of delivery as mentioned above. Customer provided shipping is also an option. Any damage, wear, or anomalies incurred to the finish after receiving parts from White Knuckle Off Road Products, LLC are the responsibility of the buyer or user.