



Nissan FRONTIER 2005-Newer

Thank you for choosing White Knuckle Rock Sliders

Please read the instructions before beginning installation. Check hardware kit contents against content list below. Also, check the tools needed against the list below.

Hardware Kit

- 1-Driver Side Rock Slider
- 1-Passenger Side Rock Slider
- 12 each 3/8" x 1" Thread Cutting Bolts (**18 each Long Bed**)
- 4 each 1/2" x 4" Grade 8 Bolts, Nuts, Flat Washers, & Lock Washers
- 2 each 1/2" x 2" Grade 8 Bolts, and Washers
- 2 each M12 x 30mm Grade 10.9 Bolts, Nuts, and Washers
- 4 each 1/4" x 3" x 5-1/2" Backing Plates
- 2 each 3/16" x 1-1/4" Backing Plates W/Welded Nut

Tools Needed

- 3/8" Drill
- 1/8", 1/4", 5/16", & 7/16" Drill Bits
- Center Punch and Hammer
- Air Impact Wrench if available
- 3/4", 16mm, 19mm Wrenches
- 9/16" Socket and Ratchet
- "C" Clamps
- 2 Axle Stands
- Bottle Jack

INSTALLATION INSTRUCTIONS

1. Place the axle stands or jack directly under the rocker panel. Place the slider on the axle stands or jack **Figure 1**.
2. The factory holes in the frame should be aligned to allow the 1/2" bolts to go thru the mounting plates and the frame. The main rail should be level and around 1/2" to 1" below the rocker panel.
3. Thread the 1/2" x 4" bolt and flat washer thru the frame and the backing plate in the front and center mounting plates **Figure 2**. Begin the nuts but keep them loose for the time being to allow for adjustment of the slider position.
4. Insert the 1/4" x 1-1/4" backing plate with welded nut (nut facing away from the bolt hole) through the slot in the bottom of the frame near the rear mounting plate and start the 1/2" x 2" bolt, lock washer, and flat washer **Figure 3**. Needle nose pliers work best to insert the backing plate through the slot. Keep all of the 1/2" fasteners loose to allow adjustment of the slider.
5. Push the M12 x 30mm Grade 10.9 bolt and washer through the bottom of the front mounting plate **Figure 4**. Begin the nuts but keep them loose for the time being to allow for adjustment of the slider position.

6. Now adjust the slider front to rear and make sure the bottom of the “L” mounting plates are snug under the frame (a bottle jack is best for this). Clamp the mounting plates to the frame or tighten the 1/2” bolts thru the factory frame holes in the desired position. “C” clamps, if used, should be as high as possible on the mounting plate to eliminate any gap between the frame and the top of the vertical portion of the mounting plate.
7. Stand back to take a look at the slider in relation to the vehicle body. Make sure the rock slider is in the desired position, level, and no gaps between the frame and the mounting plates. **Mark** the holes to be drilled on the underside and face of the frame with the 7/16” drill bit by turning the bit back and forth by hand **Figure 5**. This will help you find the exact center of each hole. Now remove the rock slider to drill the holes needed.
8. Find the marks on the frame made by the drill bit. Use the center punch on each of these marks for pre-drilling **Figure 6**.
9. Drill a pilot hole thru each of the marks with a 1/8” drill bit and then a 1/4” drill bit and finally a 5/16” drill bit. Make sure to keep the drill perpendicular to the frame when drilling the holes to insure the bolts go in straight **Figure 7**.
10. Using the 9/16” socket and ratchet or air impact wrench (recommended), begin the supplied 3/8” X 1” Thread Cutting bolts. Keep the bolts perpendicular to the frame with significant pressure against the back of the ratchet as you begin cutting the threads in the frame **Figure 8**. Continue tightening the bolts until they are easy to turn. The impact wrench is best for this procedure if available. Do not attempt to unscrew the bolt until the threads have been completely cut. **DO NOT OVERTIGHTEN** or you may strip out the threads you just cut.
11. Repeat steps 1 thru 6 to install bolts and backing plates along with the 3/8” x 1” thread cutting bolts. Rotate from bolt to bolt and end to end to insure the mounting plates have no gaps between them and the frame and continue until all bolts are tight.

Figure 1



Figure 2

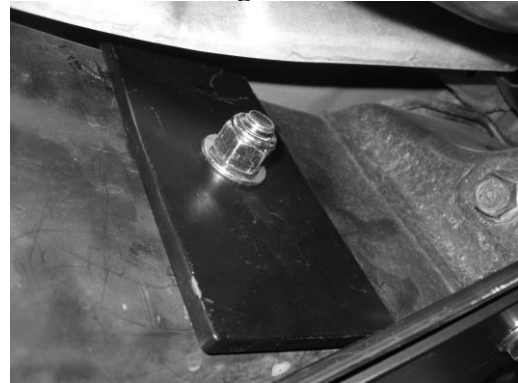


Figure 3



Figure 4

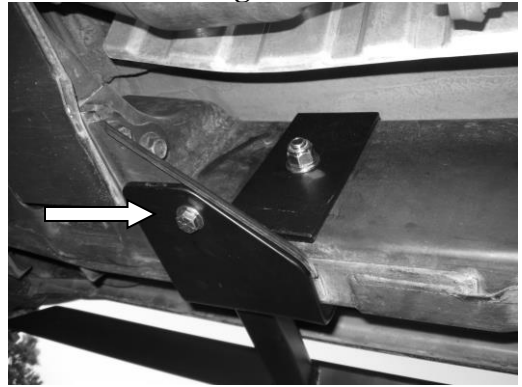


Figure 5

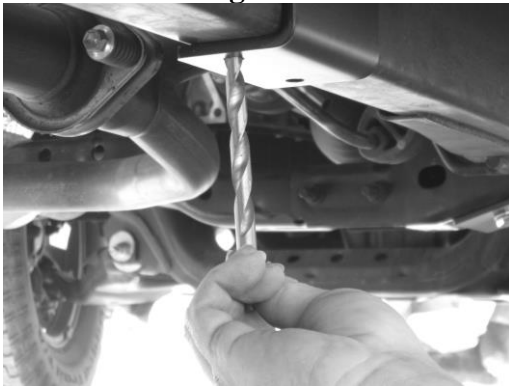


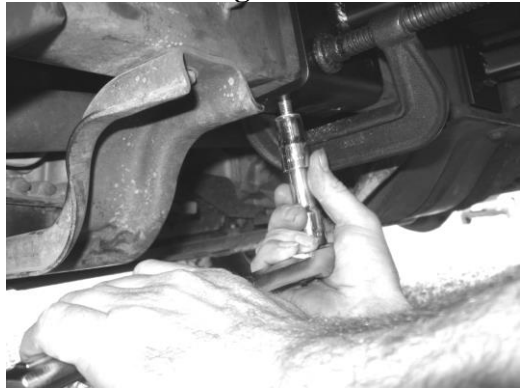
Figure 6



Figure 7



Figure 8



SAFETY FIRST

Observe proper safety procedures during installation. Improperly used tools and unsafe procedures can cause injury or death. Refer to manufacturers manuals for use and warnings of tools to be used. Modifications to your vehicle can cause dangerous conditions. The buyers and users of this product assume all risks associated with the installation and use of this product. All installations should be made by a qualified mechanic.

DISCLAIMER

White Knuckle Off Road Products, LLC stands behind all of our quality off-road fabricated products. White Knuckle Off Road Products, LLC will not be held responsible nor will we accept liability for failure of parts as a result of extreme off-road use. Minor modifications may be required to allow the installation of our products. Modifications to your vehicle using products manufactured by White Knuckle Off Road Products, LLC may create dangerous conditions. Modifications to your vehicle are done at your own risk. White Knuckle Off Road Products, LLC will not accept responsibility or liability from damage or personal injury caused by installing or using installed products manufactured by White Knuckle Off Road Products, LLC whether intended or unintended. The buyer/user accepts all responsibility and risks associated with any modifications and use of White Knuckle Off Road Products, LLC manufactured products. All products manufactured by White Knuckle Off Road Products, LLC are for off-road use only.

POWDER COAT FINISH

The powder coat finish provided by White Knuckle Off Road Products, LLC will carry NO warranty or guarantee of any kind. The powder coat finish is provided as a service only. Any damage to the finish during shipping is the responsibility of the delivery company and NOT the responsibility of White Knuckle Off Road Products, LLC. Any damage incurred during shipping MUST be noted on the Bill Of Lading or to UPS at the time of delivery. The delivery companies will not honor any claims made after the product has been delivered and damage had not been noted at the time of delivery as mentioned above. Customer provided shipping is also an option. Any damage, wear, or anomalies incurred to the finish after receiving parts from White Knuckle Off Road Products, LLC are the responsibility of the buyer or user.