

# WHITE KNUCKLE



## OFF ROAD PRODUCTS®

### OFF ROAD VEHICLE BODY PROTECTION

JEEP JT GLADIATOR 2020-Newer

Thank you for choosing White Knuckle Rock Sliders

Please read the instructions before beginning installation. Check hardware kit contents against content list below. Also, check the tools needed against the list below.

#### Hardware Kit

- 1-Driver Side Rock Slider
- 1-Passenger Side Rock Slider
- 7 each 1/2" x 1-1/2" Grade 8 Bolts,  
Flat Washers & Lock Washers
- 1 each 1/2" x 4-1/2" Grade 8 Bolt,  
Flat Washers & Lock Washers (Diesel = 2each)
- 3 each 12mm x 30mm Bolt & Flat Washers
- 4 each 3/8" x 1" Thread Cutting Bolts
- 3 each 1/4" x 7/8" x 2-1/4" Backing Plates w/welded nut
- 2 each 3/16" x 1-1/2" x 2" Backing Plates w/welded nut
- 3 each 3/16" x 2 x 5-1/4" Backing Plates w/welded nut  
(Diesel = 4each)

**On request** - 2 each 3/16" x 1-1/2" x 2" Backing Plates w/welded nut and wire (2021 – Newer)

#### Tools Needed

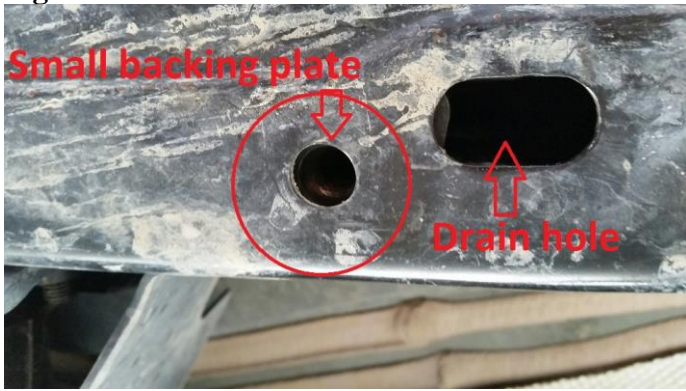
- 3/4" Socket and Ratchet
- 3/4" Wrench
- 18mm Socket
- 19mm Socket
- 2 Axle Stands
- Optional:**
- Small Bottle Jack
- 1/2" or 3/8" Drill
- 1/8" & 5/16" Drill Bits
- Center Punch and Hammer
- 9/16" Socket and Ratchet

## INSTALLATION INSTRUCTIONS

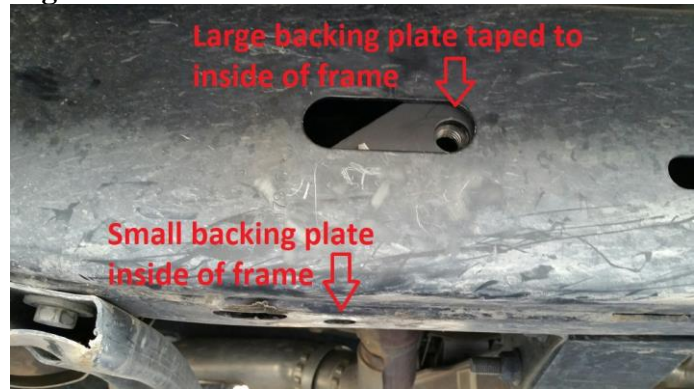
1. Beginning on the **DRIVER SIDE**, slide the small backing plate marked "Front" through the outboard slotted hole and position the backing plate so the hole in the plate lines up with the round hole at the bottom of the frame directly behind the slotted drain hole with the nut facing away from the hole **Figure 1**. Wipe the dirt and debris from the inside of the frame where the 2" x 5-1/4" plate will go then remove the two-sided tape protection from the 2" x 5-1/4" plate w/welded nut marked "Front" and slide it through the slotted hole in the outboard frame rail with the welded nut facing away from the slotted hole **Figure 2**. Repeat the previous step for the three 7/8" x 2-1/4" backing plates for the 4<sup>th</sup> mount on the driver side and the 2<sup>nd</sup> & 4<sup>th</sup> mounts on the passenger side. Install using a supplied 1/2" x 1-1/2" bolt **Figure 3**. Remove the skid plate cross member bolt at the 2<sup>nd</sup> mount from the front position **Figure 4**.
2. Place the axle stands or jack directly under the rocker panel. Place the slider on the axle stands or jack **Figure 5**. The 2<sup>nd</sup> mount from the front will need to slide into the skid plate cross member **Figure 4**.
3. The factory holes in the frame should be aligned to allow the bolts to go through the mounting plates and the frame. The main rail should be level and around 1/2" to 1" below the rocker panel.

4. Starting again at the front, begin threading a 1/2"x 1-1/2" bolt, flat washer, and lock washer through the mounting plate and large backing plate **Figure 6**. Once the bolt has been threaded, the large backing plate can be dislodged from the two-sided tape to allow the slider movement for the hole on the bottom portion of the front mounting plate to line-up. Begin threading a 1/2"x 1-1/2" bolt, flat washer, and lock washer through the bottom of the mounting plate and small backing plate **Figure 6**. Keep the bolts loose for the time being to allow for adjustment of the slider position.
5. Continuing to the 2<sup>nd</sup> mount, reinstall the factory bolt that had been removed **Figure 4**. The 2<sup>nd</sup> mount requires the 4-1/2" bolt with washers to be threaded through the large backing plate marked "2<sup>nd</sup>" **Figure 7**. **NOTE:** The DIESEL version uses this same mounting on the passenger side as the driver side.
6. The 3<sup>rd</sup>, 4<sup>th</sup>, and rear mounts will require the 12mm bolt, provided in the hardware kit, to be installed through the bottom of the mounting and threaded into the factory frame hole **Figure 8**. An extra washer has been provided to go between the rear bottom mount and the frame if the mount does not sit flush to the frame because of the weld at the frame seam.
7. The extra hole provided in both the rear and 3<sup>rd</sup> mounts can be used for extra strength with the 3/8"x 1" thread cutting bolts provided. See steps 12-14 for instructions on these bolts. Finish by tightening all the bolts.
8. **PASSENGER SIDE**. Remove the factory skid plate bolts at the 2<sup>nd</sup>, 3<sup>rd</sup>, 4<sup>th</sup>, and rear mounting positions.
9. Repeat steps 1-5.
10. Reinstall the skid plate factory bolts through the bottom of the mounting plates.
11. Finish by tightening all the bolts.
12. **OPTIONAL** - If you choose to use the provided 3/8"x 1" thread cutting bolts for the 3<sup>rd</sup> and rear mounts for extra strength, **mark** the holes to be drilled with a scribe or large drill bit through the mount and onto the frame. Find the marks on the frame and use a center punch on each of these marks for pre-drilling. Keep the holes to be drilled as centered as possible.
13. Drill a pilot hole through each of the marks with a 1/8" drill bit and then a 5/16" drill bit. Make sure to keep the drill perpendicular to the frame when drilling the holes to ensure the bolts go in straight.
14. Using the 9/16" socket and ratchet or air impact wrench, begin the supplied 3/8" X 1" thread cutting bolts. Keep the bolts perpendicular to the frame with significant pressure against the back of the ratchet as you begin cutting the threads in the frame. Continue tightening the bolts until they are easy to turn. The impact wrench is best for this procedure if available. Do not attempt to unscrew the bolt until the threads have been completely cut. **DO NOT OVERTIGHTEN** or you may strip out the threads you just cut.
15. **2021 – Newer on some vehicles:** Chrysler removed 2 threaded holes from the bottom of the frame on the driver side at the slider 4<sup>th</sup> and rear mounts, seemingly to make the installation of aftermarket parts tougher. The unthreaded holes are present and are to be used with the "3/16" x 1-1/2" x 2" backing plates w/welded nut and wire". Fish the plate through the access hole on the back side of the frame near the 4<sup>th</sup> slider mount until it is lined up with the bottom holes. Thread the 1/2" x 1-1/2" bolt through the bottom of the mounting plate and frame and into the nut.

**Figure 1**



**Figure 2**



**Figure 3**



**Figure 4**



**Figure 5**



**Figure 6**



**Figure 7**



**Figure 8**



## **SAFETY FIRST**

**Observe proper safety procedures during installation. Improperly used tools and unsafe procedures can cause injury or death. Refer to manufacturers manuals for use and warnings of tools to be used. Modifications to your vehicle can cause dangerous conditions. The buyers and users of this product assume all risks associated with the installation and use of this product. All installations should be made by a qualified mechanic.**

## **DISCLAIMER**

**White Knuckle Off Road Products, LLC stands behind all of our quality off-road fabricated products. White Knuckle Off Road Products, LLC will not be held responsible nor will we accept liability for failure of parts as a result of extreme off-road use. Minor modifications may be required to allow the installation of our products. Modifications to your vehicle using products manufactured by White Knuckle Off Road Products, LLC may create dangerous conditions. Modifications to your vehicle are done at your own risk. White Knuckle Off Road Products, LLC will not accept responsibility or liability from damage or personal injury caused by installing or using installed products manufactured by White Knuckle Off Road Products, LLC whether intended or unintended. The buyer/user accepts all responsibility and risks associated with any modifications and use of White Knuckle Off Road Products, LLC manufactured products. All products manufactured by White Knuckle Off Road Products, LLC are for off-road use only.**

## **POWDER COAT FINISH**

**The powder coat finish provided by White Knuckle Off Road Products, LLC will carry NO warranty or guarantee of any kind. The powder coat finish is provided as a service only. Any damage to the finish during shipping is the responsibility of the delivery company and NOT the responsibility of White Knuckle Off Road Products, LLC. Any damage incurred during shipping MUST be noted on the Bill Of Lading or to UPS at the time of delivery. The delivery companies will not honor any claims made after the product has been delivered and damage had not been noted at the time of delivery as mentioned above. Customer provided shipping is also an option. Any damage, wear, or anomalies incurred to the finish after receiving parts from White Knuckle Off Road Products, LLC are the responsibility of the buyer or user.**