

WHITE KNUCKLE



OFF ROAD PRODUCTS®

OFF ROAD VEHICLE BODY PROTECTION

NISSAN NV3500 VAN

Thank you for choosing White Knuckle Rock Sliders

Please read instructions before beginning installation. Check hardware kit contents against content list below.
Also, check the tools needed against the list below.

Install time: 1-2 hours
1 helper recommended

Hardware Kit

- 1-Driver Side Rock Slider
- 1-Passenger Side Rock Slider
- 1 – 1/2" X 2 X 10-1/2" Backing Plates (Driver Front)
- 1 – 1/2" X 2 X 10-1/4" Backing Plates (Passenger Front)
- 2 – 1/2" X 2 X 10" Backing Plate (Passenger 2nd and Rear)
- 1 – 1/2" X 2 X 7-1/8" Backing Plate (Driver 2nd)
- 1 – 3/8" X 2 X 10" Backing Plate (Passenger 3rd)
- 1 – 1/2" X 4 X 10" Backing Plate (Driver Rear)
- 1 – 3/4" X 2-1/2" Round Sleeve (Front Top Bolt)
- 16 – 1/2" X 5" Grade 8 Bolts, Nuts, Flat Washers, and Lock Washers
- 1 – 3/8" X 1" X 2-1/2" Plastic Spacers for Hard Line Clip with two sided tape (Driver Rear Top)

Tools Needed

- Floor Jack
- 2 Axle Stands
- 3/4" Wrench and/or Ratchet and Socket

INSTALLATION INSTRUCTIONS

1. **DRIVER SIDE** Unsnap the hard line plastic clip from the top of the vehicle frame on the driver side where the rear slider mount will sit **Figure 1**. Clean the area of the frame where the plastic spacers will be fixed. Expose the adhesive on the two sided tape and attach the plastic spacers between the frame and the hard line clips then secure assembly in original place on frame **Figure 2**. This will allow for the top bolts to be put in place.
2. Place the axle stands directly under the rocker panel. Place the rock slider on the axle stands **Figure 3**.
3. You can use the floor jack for minor adjusting of the position of the slider. Place the floor jack under the center of the rock slider and lift until the mounting plates are in a position to push the bolts through the backing plate.
4. Slide the backing plates up from the bottom against the inside of the frame to ensure brake lines, wiring, etc. will not be pinched by the backing plate. **NOTE:** Most of the bolts need to be reversed by pushing through the backing plates first then the mounting plates due to limited space. **NOTE:** The Front Top Bolt on the Driver Side will go through the Round Sleeve. The Round Sleeve will rest on the top of the frame between the mounting and backing plates **Figure 4**.
5. Once all of the bolts with washers have been started, center the slider relative to the rocker panel. Keep a consistent gap (around 1") between the slider and the bottom of the rocker panel. The gap can be adjusted by simply lifting one end. Tighten all of the nuts rotating from top to bottom to ensure the backing plate stays straight. Finally, recheck each for tightness.

Figure 1



Figure 2

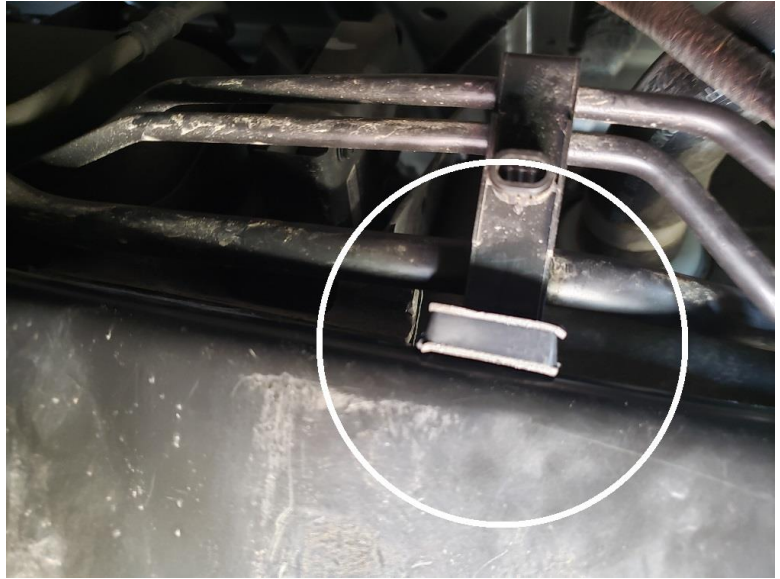
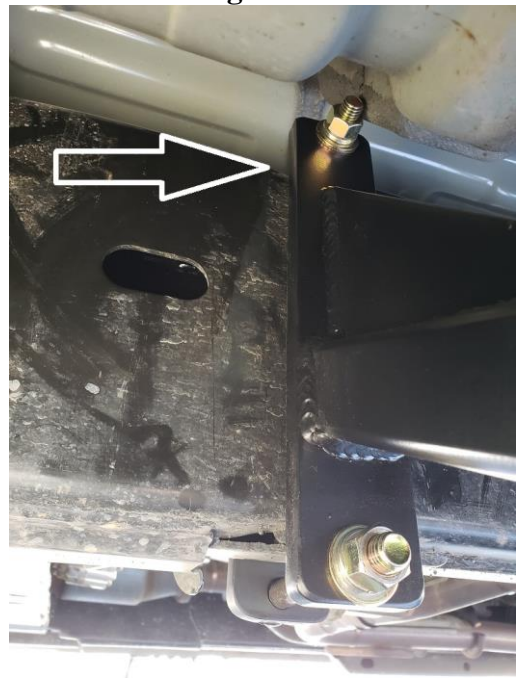


Figure 3



Figure 4



SAFETY FIRST

Observe proper safety procedures during installation. Improperly used tools and unsafe procedures can cause injury or death. Refer to manufacturers manuals for use and warnings of tools to be used. Modifications to your vehicle can cause dangerous conditions. The buyers and users of this product assume all risks associated with the installation and use of this product. All installations should be made by a qualified mechanic.

DISCLAIMER

White Knuckle Off Road Products, LLC stands behind all of our quality off-road fabricated products. White Knuckle Off Road Products, LLC will not be held responsible nor will we accept liability for failure of parts as a result of extreme off-road use. Minor modifications may be required to allow the installation of our products. Modifications to your vehicle using products manufactured by White Knuckle Off Road Products, LLC may create dangerous conditions. Modifications to your vehicle are done at your own risk. White Knuckle Off Road Products, LLC will not accept responsibility or liability from damage or personal injury caused by installing or using installed products manufactured by White Knuckle Off Road Products, LLC whether intended or unintended. The buyer/user accepts all responsibility and risks associated with any modifications and use of White Knuckle Off Road Products, LLC manufactured products. All products manufactured by White Knuckle Off Road Products, LLC are for off-road use only.

POWDER COAT FINISH

The powder coat finish provided by White Knuckle Off Road Products, LLC will carry NO warranty or guarantee of any kind. The powder coat finish is provided as a service only. Any damage to the finish during shipping is the responsibility of the delivery company and NOT the responsibility of White Knuckle Off Road Products, LLC. Any damage incurred during shipping MUST be noted on the Bill Of Lading or to UPS at the time of delivery. The delivery companies will not honor any claims made after the product has been delivered and damage had not been noted at the time of delivery as mentioned above. Customer provided shipping is also an option. Any damage, wear, or anomalies incurred to the finish after receiving parts from White Knuckle Off Road Products, LLC are the responsibility of the buyer or user.